

Ardgillan Demesne Balbriggan

Diméin Árd Ghiolláin Baile Brigín

LEGEND

Park Boundary	Information Point
Parkland Walk 2.5km	Toilets
Cycle Route 3.7km	Fountain
Paths	Wild Flower Meadow
Road	Woodland
Grassland	Information Point
Woodland	Ardgillan Castle
Entrance	Rose Garden
Parks Work Depot	Playground
Car Park	Ice House
Overflow Car Park	The Lady's Stairs
View Point	National Potentilla Collection



The Rose Garden and Victorian Conservatory

Ardgillan Castle

Although referred to as a Castle, the residence at Ardgillan is a large country-style house with castellated embellishments. Originally named "Prospect", the central section was built in 1738 by Robert Taylor, with the west and east wings added in the late 1700's. The house consists of two storeys over a basement which extends out under the lawns on the southern side of the building. Tea-rooms are located off the main reception area and are open during Castle opening times. Upstairs, the former bedrooms are used for classes and exhibitions. Tours of the Castle are available during opening hours.



Ardgillan Castle with the Mourne Mountains in the background

Ardgillan Demesne

The park covers an area of 81 Ha. (c. 200 Ac.). The name Ardgillan is derived from the Irish "Ard Choill" meaning High Wood. The parkland is a mixture of wild woodland walks, sheltered picnic areas, and rolling lawns and meadows. There are dramatic panoramic views towards the Mourne mountains and the north Dublin coastline. The restored Walled garden includes a formal herb garden, formal vegetable potager, extensive ornamental plant collection and a small museum of gardening located in the rebuilt potting sheds. Other important attractions include the formal Rose Garden, The National Plant Collection of Shrubby Potentillas with 200 varieties, a large restored Victorian Conservatory and a Herbaceous Border.

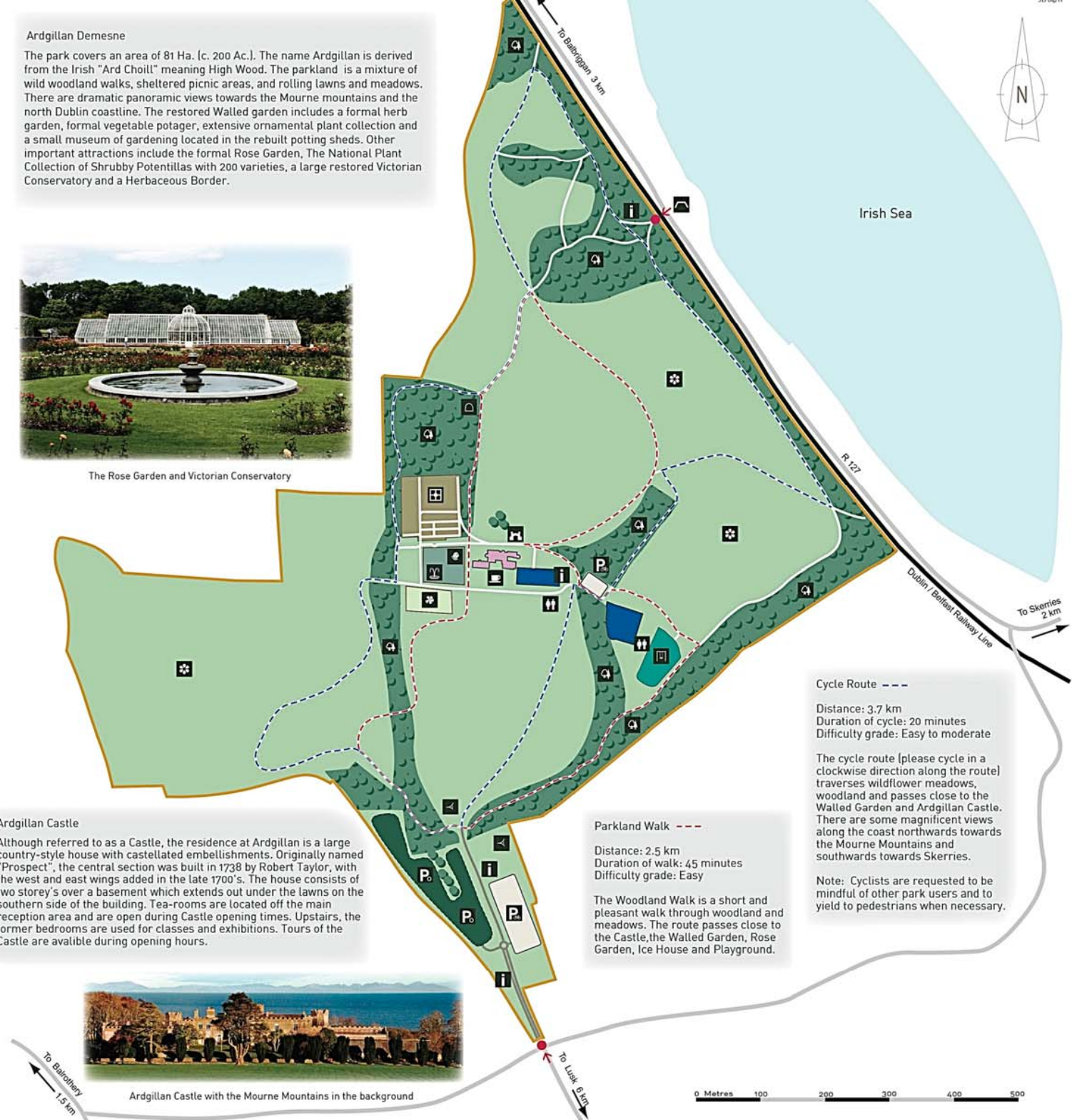
Welcome Fáilte

OPENING HOURS

January	10am – 5pm
February & March	10am – 6pm
April	10am – 7pm
June, July & August	10am – 9pm
September & May	10am – 8pm
October	10am – 7pm
November, December	10am – 5pm



Comhairle Contae Fhine Gall
Fingal County Council



Cycle Route ---

Distance: 3.7 km
Duration of cycle: 20 minutes
Difficulty grade: Easy to moderate

The cycle route (please cycle in a clockwise direction along the route) traverses wildflower meadows, woodland and passes close to the Walled Garden and Ardgillan Castle. There are some magnificent views along the coast northwards towards the Mourne Mountains and southwards towards Skerries.

Note: Cyclists are requested to be mindful of other park users and to yield to pedestrians when necessary.

Parkland Walk ---

Distance: 2.5 km
Duration of walk: 45 minutes
Difficulty grade: Easy

The Woodland Walk is a short and pleasant walk through woodland and meadows. The route passes close to the Castle, the Walled Garden, Rose Garden, Ice House and Playground.

0 Metres 100 200 300 400 500